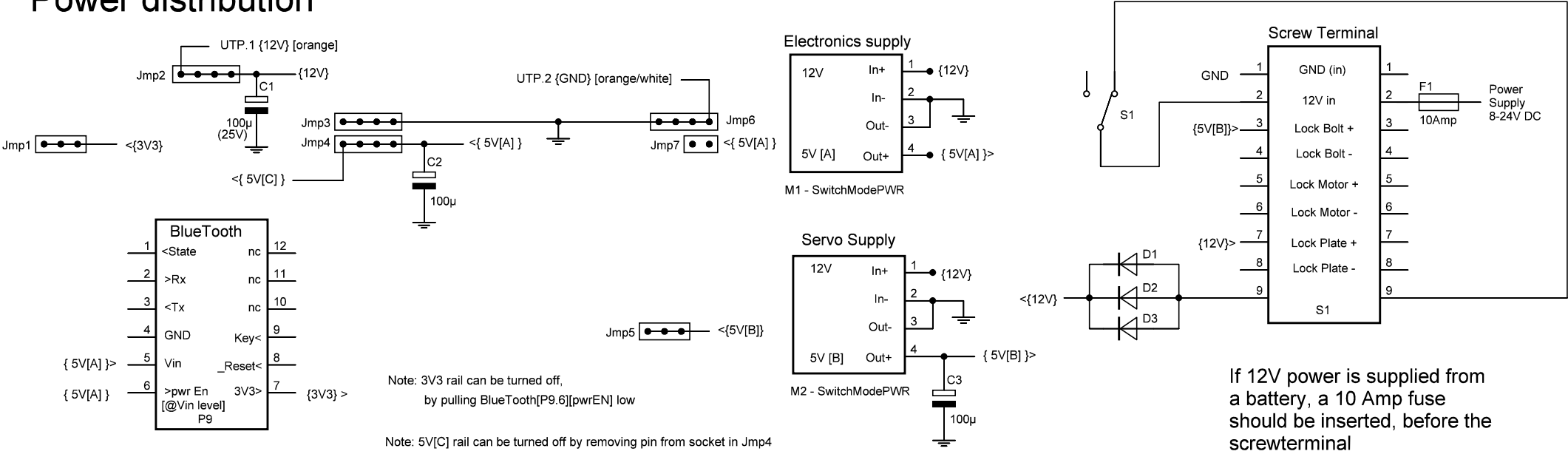
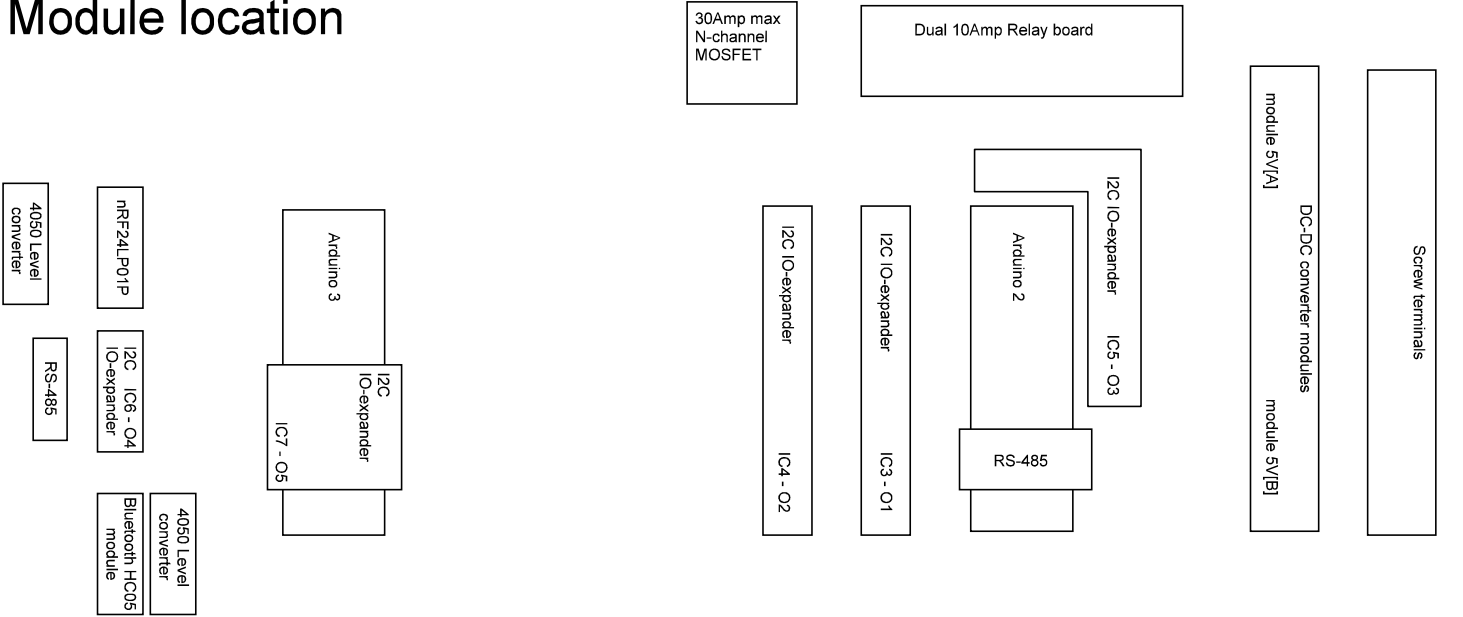


Power distribution



Module location



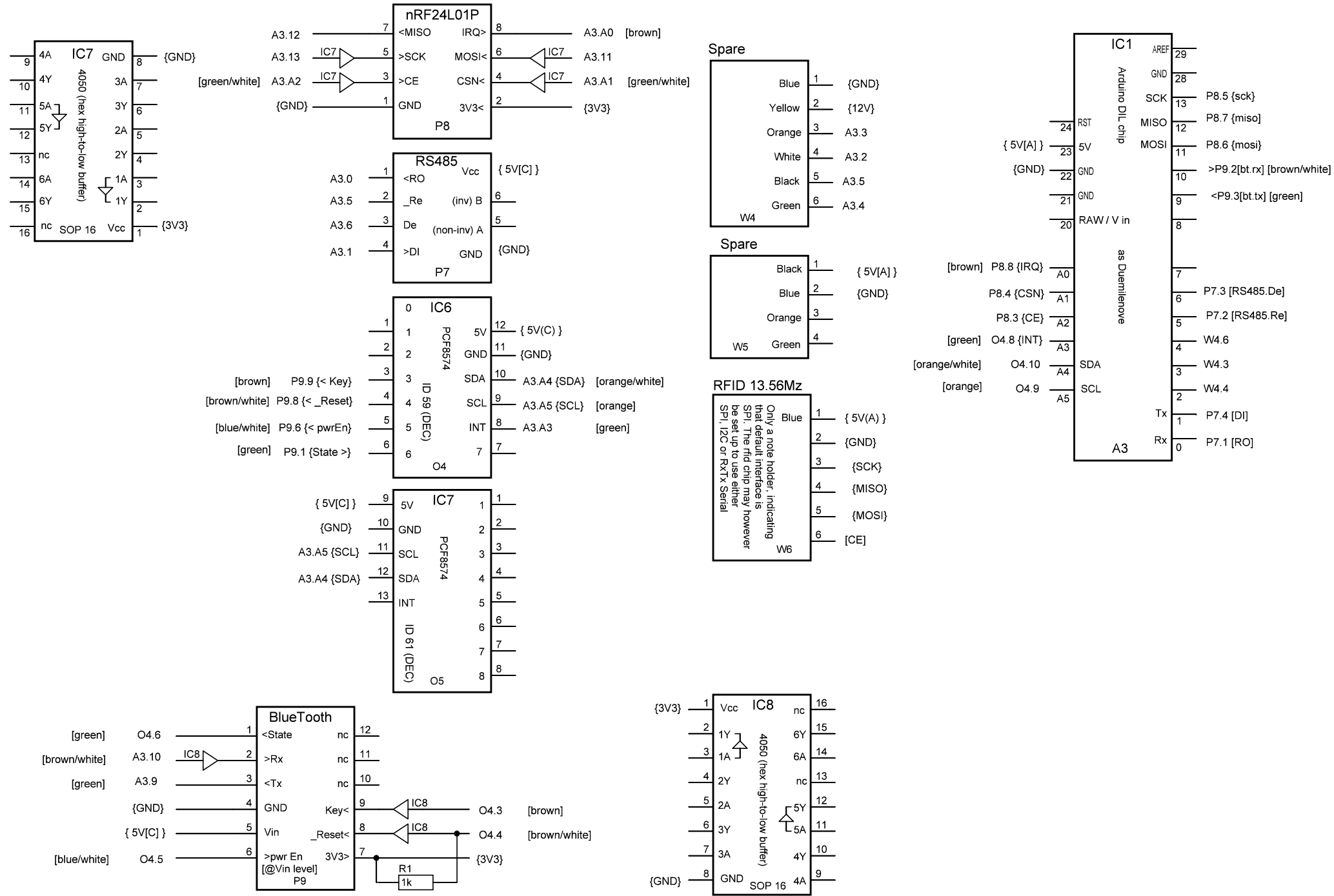
box 2 side	UTP cable To box 1	box 1 side
Jump1 {12V}>	1 Orange	16 {12V}>
Jump6 {GND}	2 Orange/White	15 {GND}
{daymode} A2.10	3 Green	14 {daymode} A.A.5
O3.1	4 Green/White	13 {+12V} S1.3
O3.2	5 Brown	12 Locked [LED1][active LOW]
P5.5 {day mode}	6 Brown/White	11 Unlocked [LED2][active LOW]
P4.3 {exit button}	7 Blue	10 < {Day/Night} A1.7
	8 Blue/White	9 {exit button } W2.2
	W1	

DoorArduino^{box2}

Arduino 3 - Electronic Interfaces

Update: 2014-04-15

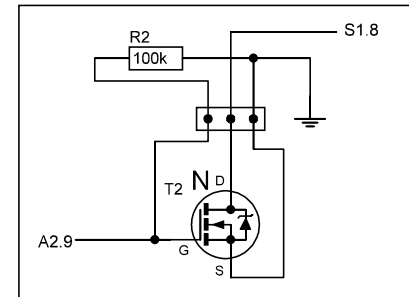
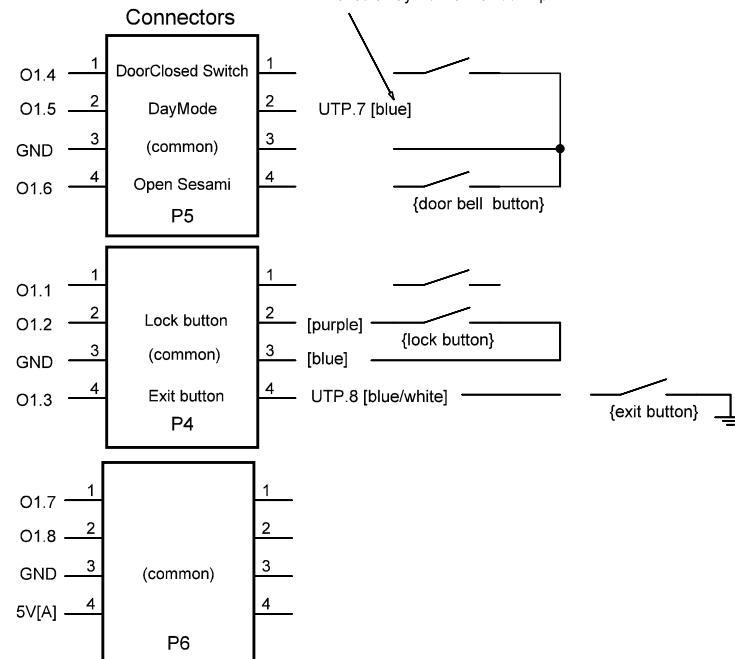
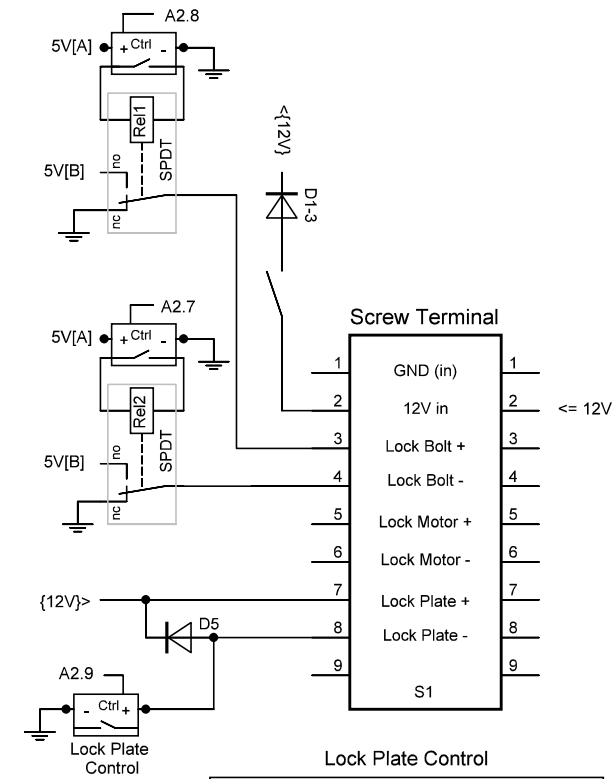
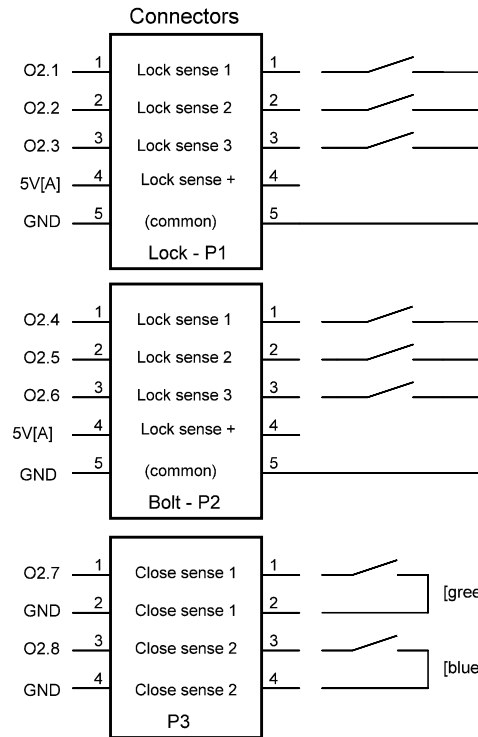
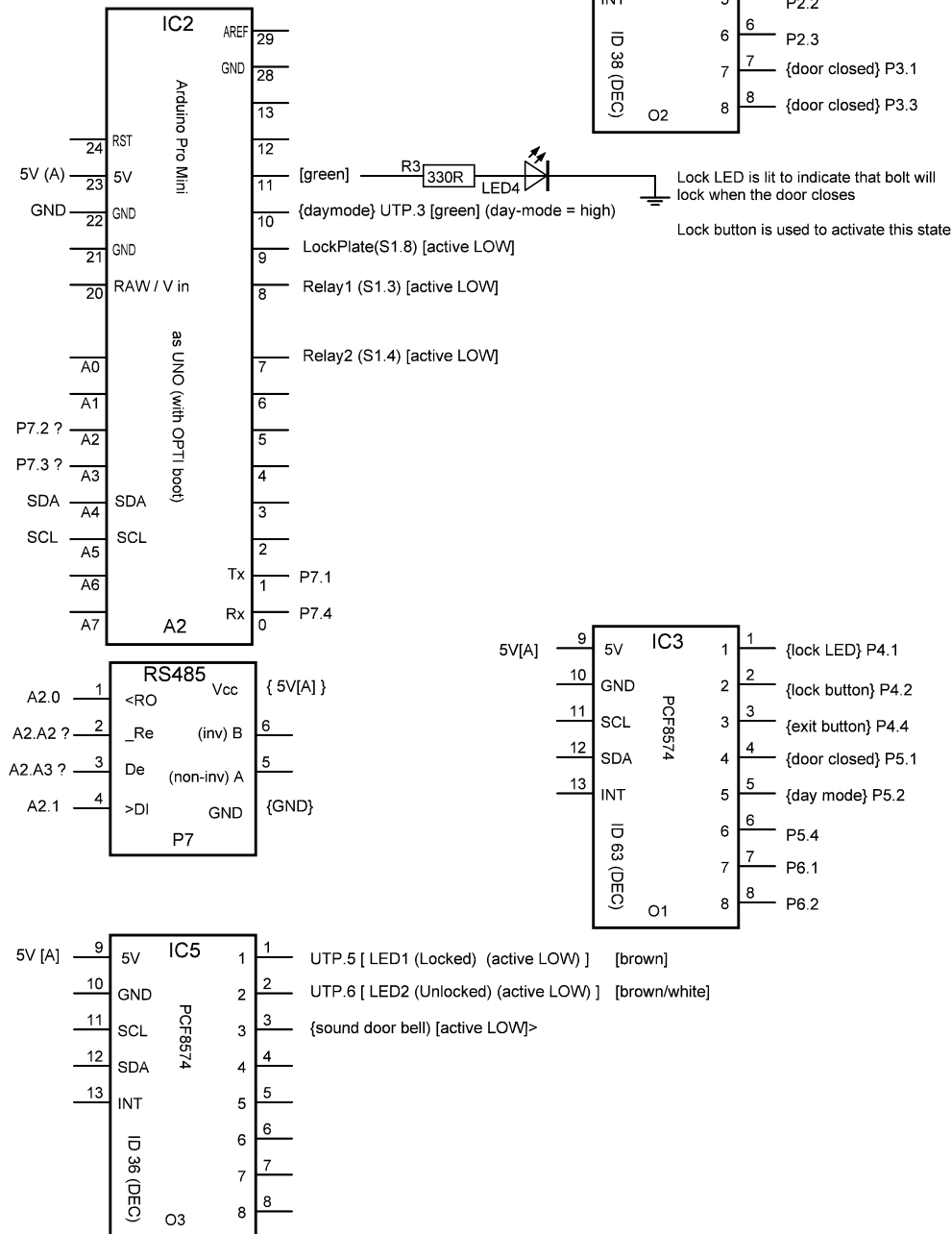
<socket> <pin number> ex. A3.5
[note/info] ex. [green]
{function/group socket} ex. {green LED} {3V3}



DoorArduino^{box2}

Arduino 2 - Motor control

Update: 2014-04-15



Note:
- move LED4 connection